



## EDUCATION

# Safeguarding and Child Protection Policy

<b>Document title:</b>	Safeguarding and Child Protection Policy
<b>Version number:</b>	2.3
<b>Policy Status</b>	Approved
<b>Date of Issue</b>	September 2019
<b>Date to be revised</b>	September 2020

### Revision Log (last 6 changes)

Date	Version No	Brief detail of change
April 16	1.3	Revised to ensure compliance and clarity
Sept 16	1.4	Updated to take account of 'Keeping Children Safe in Education' (2016)
Nov 16	2.0	Revision taking account of KCC and Medway model policy
Sept 17	2.1	Amended to reflect updated DfE Guidance : ' Working Together to Safeguard Children' & 'Child Sexual Exploitation'.
Sept 18	2.2	Amended to reflect Keeping Children Safe in Education (2018) and Sexual Violence and Sexual Harassment in Schools and Colleges (Dec 17)
Sept 19	2.3	Amended to reflect Keeping Children Safe in Education (2019) with particular reference to the introduction of Safeguarding Children Multi-agency Partnerships.

# Langley Park Primary Academy

## Key contact personnel in Academy

Designated Safeguarding Lead: Mrs Libby Fidock

Deputy Designated Safeguarding Lead: Mrs Kelly Carter

Looked After Child Coordinator: Mrs Libby Fidock

Named Safeguarding Governor: Mrs Jane Tipple

All staff should have access to this policy and sign to the effect that they have read and understood its content.

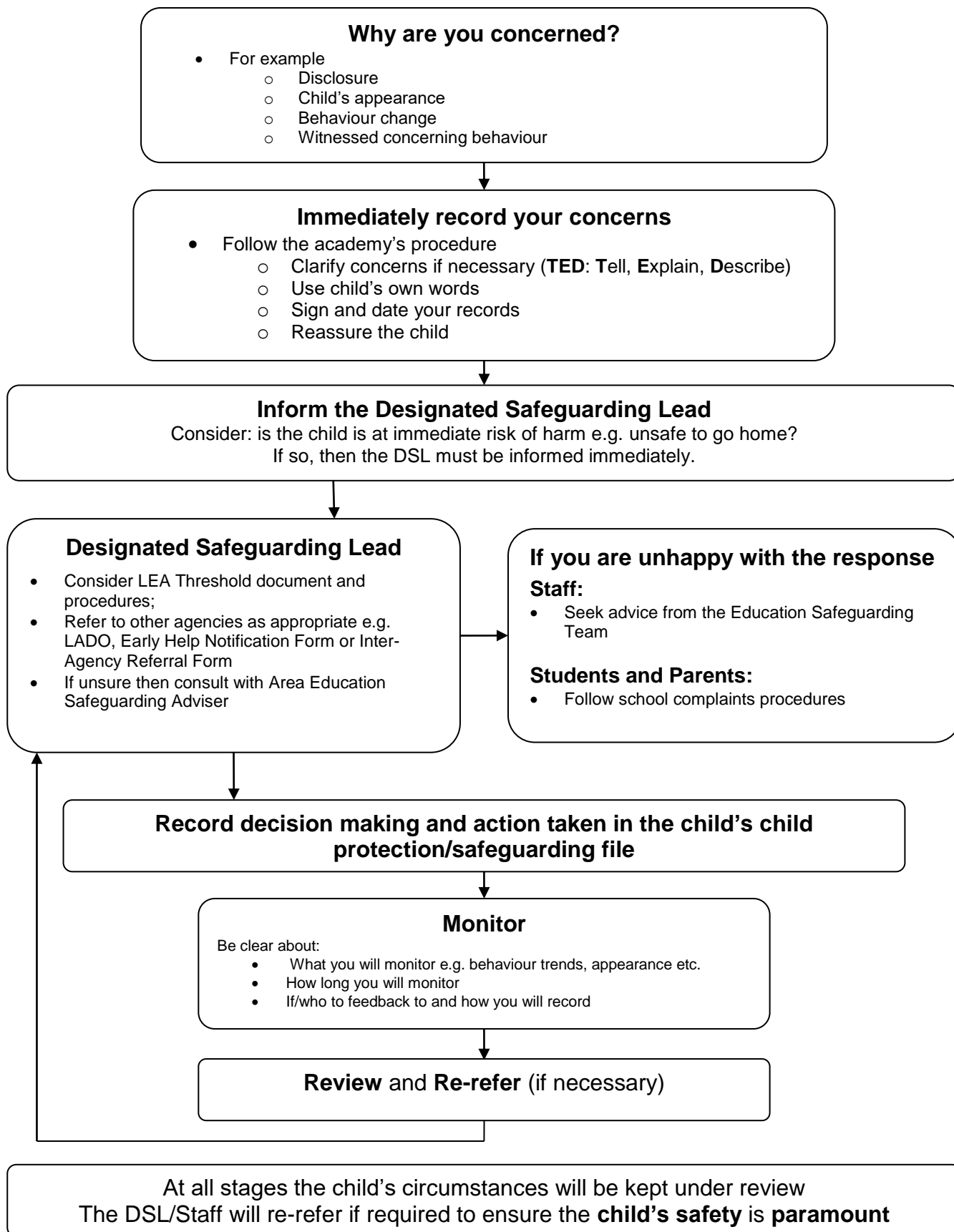
Date agreed: 2nd September 2019

Date of next review: 1st September 2020

## Contents

	<b>Page no</b>
What to do if you have a welfare concern - flowchart	3
1. Introduction and ethos	4
2. Definition of safeguarding	4
3. Context	4
4. Related safeguarding policies	5
5. Key responsibilities	6
6. Local support	8
7. Recognition and categories of abuse	8
8. Staff induction, awareness and training	9
9. Safe working practice	10
10. Staff supervision and support	11
11. Safer recruitment	11
12. Safeguarding and child protection procedures	12
13. Record keeping	13
14. Working with other agencies	14
15. Confidentiality and information sharing	14
16. Complaints	14
17. Allegations against members of staff and volunteers	14
18. Allegations against students	15
19. Safeguarding children with special educational needs and disabilities	15
20. Curriculum and staying safe	16
21. Online safety	16
22. Gangs, County Lines, Violent Crime and Exploitation	
23. The use of school premises by other organisations	17
24. Security	17
Appendix 1: Responsibilities of the Governing Body and the Headteacher	18
Appendix 2: Categories of Abuse	19
Appendix 3: Specific Safeguarding Issues	21
Appendix 4: Keeping yourself safe when responding to disclosures	24
Appendix 5: National Support Organisations	25

# What to do if you have a welfare concern in Dartford Primary Academy



## 1. Introduction and ethos

- Langley Park Primary Academy is a community and all those directly connected (staff, governors, parents, families and students) have an essential role to play in making it safe and secure. Langley Park Primary Academy recognises our moral and statutory responsibility to safeguard and promote the welfare of all children.
- Langley Park Primary Academy recognises the importance of providing an ethos and environment within the academy that will help children to feel safe, secure and respected; encourage them to talk openly; and enable them to feel confident that they will be listened to. We are alert to the signs of abuse and neglect and follow our procedures to ensure that children receive effective support, protection and justice.

## 2. Definition of Safeguarding

- 'Safeguarding is not just about protecting children from deliberate harm. It includes a wide range of issues relating to pupil's welfare, health and safety' (Inspecting safeguarding in early years, education and skills, Ofsted 2019).
- Our academy core safeguarding principles are:
  - It is a whole academy responsibility to safeguard and promote the welfare of children as its paramount concern;
  - All children (defined as those up to the age of 18) regardless of age, gender, ability, culture, race, language, religion or sexual identity, have equal rights to protection;
  - All children have a right to be heard and to have their wishes and feelings taken into account;
  - All staff understand safe professional practice and adhere to our code of conduct and other associated policies;
  - All staff have a responsibility to recognise vulnerability in children and act on any concern in accordance with this guidance.
- There are four main elements to our safeguarding policy
  - **Prevention** (e.g. positive, supportive, safe academy culture, curriculum and pastoral opportunities for children, safer recruitment procedures);
  - **Protection** (by following the agreed procedures, ensuring all staff are trained and supported to respond appropriately and sensitively to safeguarding concerns);
  - **Support** (for all students, parents and staff, and where appropriate specific intervention for those who may be at risk of harm);
  - **Working with parents and other agencies** (to ensure appropriate communications and actions are undertaken).
- The procedures contained in this policy apply to all staff and governors and are consistent with those of Kent Safeguarding Children Multi-agency Partnership (KSCMP).
- All safeguarding policies will be reviewed on an annual basis by the Leigh Academies Trust, and a representative of the Academy Board that has responsibility for oversight of academy safeguarding and child protection. The Designated Safeguarding Lead will ensure regular reporting on safeguarding activity and systems in academy to the Academy Board. The Academy Board will not receive details of individual student situations or identifying features of families as part of their oversight responsibility.

## 3. Context

- This policy has been developed in accordance with the principles established by the Children Acts 1989 and 2004 and related guidance. This includes:
  - DfE guidance Keeping Children Safe in Education 2019 (KCSIE)

- Working Together to Safeguard Children 2017 (WTSC)
- Framework for the Assessment of Children in Need and their Families (2000)
- Kent Safeguarding Children Procedures
- Section 175 of the Education Act 2002 requires school governing bodies, local education authorities and further education institutions to make arrangements to safeguard and promote the welfare of all children who are students at a school, or who are students under 18 years of age. Such arrangements will have to have regard to any guidance issued by the Secretary of State.
- The academy acknowledges that this policy will incorporate a range of safeguarding issues including (but not limited to):
  - Bullying (including cyberbullying)
  - Children missing education
  - Child missing from home or care
  - Child Sexual Exploitation (CSE)
  - Domestic violence
  - Drugs and alcohol
  - Fabricated or induced illness
  - Gangs and youth violence
  - Hate
  - Honour based violence, including Female Genital Mutilation (FGM)
  - Human trafficking and slavery
  - Forced marriage
  - Gangs and youth violence
  - Gender based abuse and violence against women and girls
  - Mental health
  - Online Safety
  - Peer on Peer Abuse
  - Preventing radicalisation and extremism
  - Private fostering
  - Relationship abuse
  - Sexual violence and sexual harassment
  - Upskirting
  - Youth Produced Sexual Imagery or “Sexting”

(Also see Annex A within ‘Keeping Children Safe in Education’ 2019)

- Every member of staff at Langley Park Primary Academy recognises that children experiencing specific safeguarding issues identified above are no different to safeguarding against any other vulnerability or concern and will be approached and responded to in the same way as protecting children from any other risks.

#### **4. Related safeguarding policies**

- We are aware that safeguarding is fundamental to the welfare of all children in our care. This policy is therefore one of a number in the academy integrated safeguarding portfolio and should be read and followed in conjunction with the policies and other documents as listed below.
  - Behaviour Management,
  - Online Safety
  - Anti-Bullying
  - Data Protection and Information Sharing

- Drugs
- Sex Education
- Health and Safety
- Attendance
- Risk Assessments (e.g. academy trips, use of technology)
- First Aid and Accidents
- Managing Allegations Against Staff
- Code of Conduct for Staff
- Safer Recruitment
- Whistleblowing

## 5. Key responsibilities

- Everyone who comes into contact with children and their families has a role to play in safeguarding children. Schools and colleges form part of the wider safeguarding system for children.
- The academy senior leadership have read and will follow KCSIE 2019. Further information regarding the key strategic responsibilities of the Academy Board and Principal are identified in Appendix 1.
- The academy has a nominated governor for safeguarding named on the front of this document. In conjunction with Leigh Academies Trust the nominated governor will take a lead role in ensuring that the academy has an effective policy which interlinks with other related policies; that locally agreed procedures are in place and being followed; and that the policy and structures supporting safeguarding children are reviewed at least annually.
- The Academy Board, Principal and Leadership Team will ensure that the DSL and Deputy DSL(s) are properly supported in this role at a time and resource level.

### 5.1 Designated Safeguarding Lead (DSL)

- The academy has appointed a member of the leadership team as shown on page 2 the Designated Safeguarding Lead (DSL). The DSL has the overall responsibility for the day-to-day oversight of safeguarding and child protection systems in academy.
- The DSL will undergo appropriate and specific training to provide them with the knowledge and skills required to carry out their role. The DSL's training will be updated formally every two years but their knowledge and skills will be updated through a variety of methods including e-bulletins, on-line training, meetings across the Trust and assess to courses at regular intervals, at least annually, to keep up with any developments relevant to their role.
- The academy has appointed additional staff to deputise for the DSL as identified at the front of this policy document. Deputy DSLs have attended appropriate training that enables them to fulfil this role. Whilst the activities of the designated safeguarding lead may be delegated to the deputies, the ultimate lead responsibility for safeguarding and child protection remains with the designated safeguarding lead and this responsibility will not be delegated.
- **It is the role of the DSL to:**
  - Act as the central contact point for all staff to discuss any safeguarding concerns
  - Maintain a confidential recording system for safeguarding and child protection concerns
  - Coordinate safeguarding action for individual children
  - Liaise with other agencies and professionals in line with Working together to safeguard children
  - Ensure that locally established procedures are followed and making referrals to other agencies, including Early Help and Specialist Childrens Services (SCS) as necessary
  - Represent, or ensure the academy is appropriately represented at inter-agency safeguarding meetings (including Child Protection conferences)

- Manage and monitor the academy's part in Early Help / Child in Need / Child Protection plans
- Be available during term time (during academy hours) for staff in the academy to discuss any safeguarding concerns
- Ensure all staff access appropriate safeguarding training and relevant updates in line with the recommendations within KCSIE (2019)
- Further details about the role of the DSL can be found in 'Keeping Children Safe in Education' 2019 (KSCIE), Part 2.

## 5.2 Members of staff

- **All members of staff have a responsibility to:**
  - provide a safe environment in which children can learn
  - ensure all children are able to develop appropriate strategies to recognise and respond to risk and build resilience
  - identify and recognise children who may be in need of extra help, who are suffering, or are likely to suffer significant harm
  - provide help for children, where appropriate and reasonable
  - take appropriate action to prevent safeguarding concerns escalating and work with other services as needed
  - safeguard children's wellbeing and maintain public trust in the teaching profession as part of their professional duties
  - maintain an attitude of 'it could happen here' where safeguarding is concerned and to always act in the best interests of the child
  - respond to and refer any concerns about children or other members of the community in accordance with this policy
  - Contribute towards, read and adhering to the academy policies
- **All members of staff in XXXXXXXXXX Academy know what to do if a child tells them he/she is being abused or neglected, and the process for making referrals.** Members of staff know to maintain an appropriate level of confidentiality whilst at the same time liaising with relevant professionals such as the DSL and other agencies as appropriate. Members of staff know they must never promise a child that they will not tell anyone about a concern or allegation as this may ultimately not be in the best interests of the child. See appendix 4 for advice for staff on responding to safeguarding concerns.
- **The welfare and safety of children are the responsibility of all staff in the academy and ANY concern for a student's welfare MUST always be reported to the Designated Safeguarding Lead(s).**
- If in exceptional circumstances the Designated Safeguarding Lead (or Deputy) is not available this should not delay appropriate action being taken. Staff should refer to available members of the leadership team or if this is not possible necessary contact social care directly if they deem appropriate.

## 5.3 Children and young people

- **Children and young people (students) have a responsibility to:**
  - Contribute to the development of academy safeguarding policies;
  - Seek help from a trusted adult if things go wrong, and support others that may be experiencing safeguarding concerns;
  - Develop and take responsibility (at a level that is appropriate to their individual age, ability and vulnerabilities) for keeping themselves and others safe, including online.

## 5.4 Parents and Carers

- **Parents/carers have a responsibility to:**



- Read the relevant academy policies and procedures, encouraging their children to adhere to them, and adhering to them themselves where appropriate;
- Discuss safeguarding issues with their children, support the academy in their safeguarding approaches, and reinforce appropriate safe behaviours at home;
- Identify changes in behaviour which could indicate that their child is at risk of harm online;
- Seek help and support from the academy, or other appropriate agencies, if they or their child encounters any safeguarding concern;
- Contribute to the development of the academy's safeguarding policies.
- A statement in the academy website will inform parents and carers about our school's duties and responsibilities under child protection and safeguarding procedures.
- Parents can obtain a copy of the academy Safeguarding and Child Protection Policy and other related policies on request and can view them via the academy website.
- Parents can find information related to key contacts on the 'Contact Us' section of the academy website.

## 6. Local support

- All members of staff in Langley Park Primary Academy are made aware of local support available
  - **Contact details for Area Safeguarding Adviser (Education Safeguarding Team)**
    - North Kent: 03000 412445;
    - West Kent: 03000 412284
  - **Contact details for Online Safety (Education Safeguarding Team)**
    - Rebecca Avery, Education Safeguarding Adviser (Online Protection) 03000 415797:
    - Ashley Assiter, e-Safety Development Officer 03000 415797
  - **Contact details for the LADO**
    - Telephone: 03000 410888
  - **Childrens Social Work Services**
    - Front Door: 03000 411111
    - Out of Hours Number: 03000 419191
  - **Early Help and Preventative Services**
    - 03000 419222
  - **Kent Police**
    - 101 (or 999 if there is an immediate risk of harm)
  - **Kent Safeguarding Children Multi-agency Partnership (KSCMP)**
    - 03000 421126

## 7. Recognition and categories of abuse

- All staff in the academy should be aware of the definitions and signs and symptoms of abuse. There are four categories of abuse:
  - Physical abuse

- Sexual abuse
  - Emotional abuse
  - Neglect
- The most up to date definitions and possible indicators and signs of abuse are found in Appendix 2. Staff should also refer to Part 1 and Annex A within 'Keeping Children Safe in Education' 2019 (KCSIE) (see appendix 5) and 'What to do if you are worried a child is being abused' 2015.
  - Members of staff are made aware that that child welfare concerns may arise in many different contexts, and can vary greatly in terms of their nature and seriousness. Children may be abused in a family or in an institutional or community setting, by those known to them or by a stranger. They may be abused by an adult or adults, or another child or children. Children may be abused via the Internet by their peers, family members or by unknown and in some cases unidentifiable individuals. In the case of honour-based violence, including forced marriage and female genital mutilation, children may be taken out of the country to be abused. An abused child will often experience more than one type of abuse, as well as other difficulties in their lives.
  - Abuse and neglect can happen over a period of time, but can also be a one-off event. Child abuse and neglect can have major long-term impacts on all aspects of a child's health, development and well-being.
  - The warning signs and symptoms of child abuse and neglect can vary from child to child. Children also develop and mature at different rates so what appears to be worrying for a younger child might be normal behaviour for an older child.
  - Parental behaviours may also indicate child abuse or neglect, so staff should also be alert to parent-child interactions which are concerning and other parental behaviours. This could include parents who are under the influence of drugs or alcohol or if there is a sudden change in their mental health.
  - By understanding the warning signs, we can respond to problems as early as possible and provide the right support and services for the child and their family. It is important to recognise that a warning sign doesn't automatically mean a child is being abused.
  - All members of staff should be aware that children can be subject to peer on peer abuse. This is most likely to include, but may not be limited to, bullying (including cyberbullying), sexual violence, sexual harassment and sexting. This abuse is often of a gendered nature, with girls more likely to be victims and boys perpetrators.
  - All allegations will be taken seriously and never be tolerated or passed off as "banter", "just having laugh" or "part of growing up".
  - The academy will employ strategies and programmes to minimise the risk of peer on peer abuse taking place. Where such allegations arise they will be thoroughly investigated and dealt through procedures outlined the academy's behaviour and exclusions policies, with appropriate support being provided to the victim. It may be necessary in such cases to liaise or report to external agencies.

## **8. Staff induction, awareness and training**

- All members of staff have been provided with a copy of part one of the 'Keeping Children Safe in Education' 2019 (KCSIE) that covers safeguarding information. Senior leaders will read the entire document. Senior leaders and all members of staff who work directly with children will access Annex A within 'Keeping Children Safe in Education' 2019 (KCSIE). Members of staff have signed to confirm that they have read and understood Part One and Annex A, and this information is kept by the DSL
- Every member of staff and governors appointed to Leigh Academies Trust will undertake online safeguarding training prior to beginning their role. Access to this will be made available via the Trust HR department and completion will be monitored via the academy.

Completion by governors will be monitored by the Trust Governance Officer. This induction also includes a module on radicalisation.

- The DSL will make sure that all volunteers and temporary staff are aware of the academy's internal safeguarding processes.
- In addition to the online training the DSL will ensure that all new staff and volunteers are appropriately inducted as regards the academy's internal safeguarding procedures and communication lines. A summary information sheet is available to be given to staff and volunteers to support this process.
- All staff members will receive appropriate safeguarding and child protection training (organised by the DSL) which will enable them to:
  - **Recognise** potential safeguarding and child protection concerns involving students and adults (colleagues, other professionals and parents/carers)
  - **Respond** appropriately to safeguarding issues and take action in line with this policy
  - **Record** concerns in line with the academy policies
  - **Refer** concerns to the DSL and be able to seek support external to the academy if required
- Staff will receive appropriate training to ensure they are aware of a range of safeguarding issues and are aware that behaviours linked to the likes of drug taking, alcohol abuse, truanting and peer on peer abuse such as bullying and sexting can put children in danger. The staff training will also include academy responsibilities, the academy child protection procedures, online safety, safe working practice and external reporting mechanisms.
- All staff members will receive regular safeguarding and child protection updates, through staff briefings, Trust and Academy training session, e-bulletins and online training, as required, but at least annually, to provide them with relevant skills and knowledge to safeguard children effectively.
- All members of staff will be made aware of the academy's expectations regarding safe and professional practice via the staff behaviour policy (or code of conduct) and Acceptable Use Policy (AUP) which is provided and discussed as part of the induction process.
- The academy recognises the expertise which members of staff build by undertaking safeguarding training and managing safeguarding concerns on a daily basis. Opportunity is therefore provided for all staff to contribute to and shape safeguarding arrangements and the safeguarding through regular engagement with the DSL.
- The DSL and Principal will provide an annual report to the Academy detailing safeguarding training undertaken by all staff and will maintain up to date registers of who has been trained.
- Although the academy has a nominated lead for the Academy Board as identified on page 2, all members of the Academy will access appropriate safeguarding training which covers their specific strategic responsibilities on a regular basis.

## 9. Safe working practice

- All members of staff are required to work within clear guidelines on Safe Working Practice / the academy's Code of Conduct.
- Children may make allegations against staff in situations where they feel vulnerable or where they perceive there to be a possible risk to their welfare. As such, all staff should take care not to place themselves in a vulnerable position regarding child protection or potential allegations. For example, it is always advisable for interviews or work with individual children or parents to be conducted in view of other adults.
- Physical intervention should only be used when the child is endangering him/herself or others and such events should be recorded and signed by a witness. Staff should be

aware of the academy's **Behaviour Policy** and **Positive Handling Policy** and any physical interventions must be in line with agreed policy and procedure in which appropriate training should be provided.

- Full advice and guidance can be found in **Guidance for Safer Working Practice for Adults Who Work with Children and Young People in Education Settings (2015)** which can be found on the Trust portal and in the staff room and main office on both sites.
- Staff should be particularly aware of the professional risks associated with the use of social media and electronic communication (email, mobile phones, texting, social network sites etc.) and should familiarise themselves with advice and professional expectations outlined in **Guidance for Safer Working Practice for Adults who Work with Children and Young People in Education Settings**, the academy's **Acceptable Use Policy** and **Safe Practice with Technology – Guidance for Adults who Work with Children and Young People**

## 10. Staff supervision and support

- Any member of staff affected by issues arising from concerns for children's welfare or safety can seek support from the DSL.
- All new staff including newly qualified teachers and support staff will receive induction training and have a mentor or co-ordinator with whom they can discuss concerns including safeguarding concerns.
- The induction process will include familiarisation with child protection responsibilities and procedures to be followed if staff have any concerns about a child's safety or welfare.
- The academy will provide appropriate supervision and support for all members of staff to ensure that:
  - All staff are competent to carry out their responsibilities for safeguarding and promoting the welfare of children
  - Staff are able to creating an environment where members of staff feel able to raise concerns and feel supported in their safeguarding role
  - All staff have regular reviews of their own practice to ensure they improve over time.
- The DSL, supported by the Trust People department, can put staff in touch with outside agencies for professional support if they so wish. Staff can also approach organisations such as their union, the Education Support Partnership or other similar organisations directly. Further information about accessing the Education Support Partnership can be found via the LAT Trust Portal and other organisations within Appendix 5 of this document.
- The academy will ensure that members of staff who are working within the foundation stage are provided with appropriate supervision in accordance with the statutory requirements of Early Years Foundation Stage (EYFS) 2017.

## 11. Safer recruitment

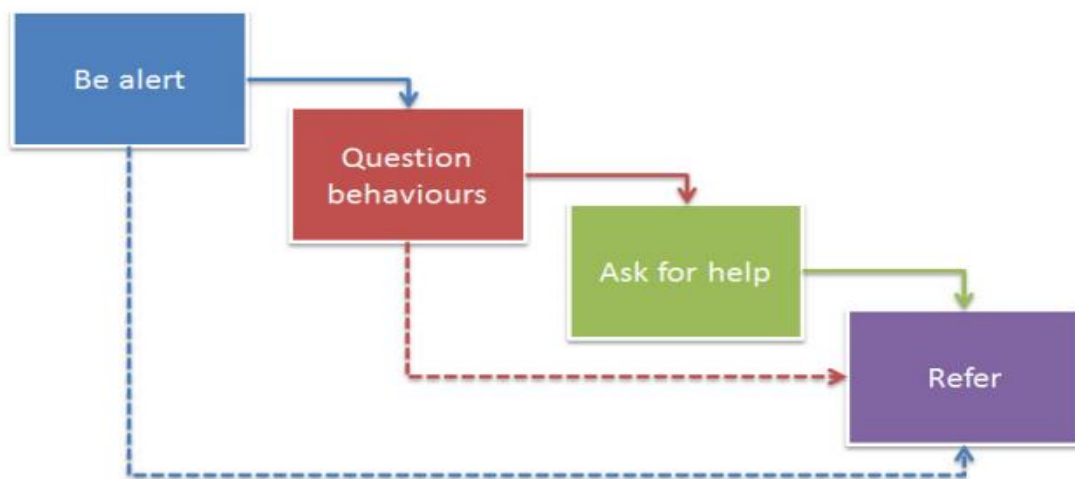
- Langley Park Primary Academy is committed to ensure that all steps are taken to recruit staff and volunteers who are safe to work with our students and have their welfare and protection as the highest priority. The Academy Board and Leadership Team are responsible for ensuring that the academy follows safe recruitment processes outlined within guidance, including in conjunction with the Trust HR team, accurate maintenance of the Single Central Record (SCR); and an application, vetting and recruitment process which places safeguarding at its centre, regardless of employee or voluntary role.
- The Academy Board will ensure that the Principal, other senior staff responsible for recruitment complete accredited Safer Recruitment Training in line with government

requirements. The academy will maintain a minimum of at least one person who conducts any interview has completed the safer recruitment training.

- Langley Park Primary Academy is also committed to supporting the statutory guidance from the Department for Education on the application of the Childcare (Disqualification) Regulations 2009 and related obligations under the Childcare Act 2006 in schools.
- The academy advises all staff to disclose any reason that may affect their suitability to work with children including convictions, cautions, court orders, reprimands and warnings.

## 12. Safeguarding and child protection procedures

- Langley Park Primary Academy adheres to the local Kent Safeguarding Children Multi-agency Partnership (KSCMP) procedures. The full procedures and additional guidance relating to specific safeguarding issues can be found on the Safeguarding Children Board website.
- All members of staff are expected to be aware of and follow this approach:



- It may not always be appropriate to go through all four stages sequentially and if a child is in immediate danger or is at risk of harm, a referral should be made immediately to children's social care and/or the police.
- **The role of the academy in situations where there are child protection concerns is NOT to investigate but to recognise and refer.**
- It is the responsibility of the DSL to receive and collate information regarding individual children, to make immediate and on-going assessments of potential risk and to decide actions necessary (with parents / carers in most cases). This includes the need to make referrals to partner agencies and services.
  - To help with this decision s/he may choose to consult with the Area Education Safeguarding Advisor from the Education Safeguarding Service and/or the Education Safeguarding Advisor (Online Protection) for online safety concerns. They may also seek advices or guidance from a social worker at the Front Door Service.
  - Issues discussed during consultations may include the urgency and gravity of the concerns for a child or young person and the extent to which parents/carers are made aware of these.
- All members of staff are made aware of the early help process, and understand their role within it. This includes identifying emerging problems, liaising with the designated safeguarding lead, sharing information with other professionals to support early

identification and assessment and, in some cases, acting as the lead professional in undertaking an early help assessment.

- If early help is assessed to be appropriate then the DSL will support staff members involved with the family in liaising with other agencies and submitting an Early Help Notification Form. The DSL will keep all early help cases under constant review and will give consideration to making a referral to the Front Door if the situation doesn't appear to be improving for the child.
- New referrals to services will be made using the agreed process. In situations where there are felt to be urgent or grave concerns the DSL or Deputy DSL may seek advice from the Education Safeguarding Service or via consultation with a social worker from the Front Door. If anyone other than the DSL makes a referral to external services, then they will inform the DSL as soon as possible.
- All members of staff are aware of the process for making referrals to SCS for statutory assessments under the Children Act 1989 that may follow a referral, along with the role they might be expected to play in such assessments.
- **In all but the most exceptional circumstances, parents /carers will be made aware of the concerns felt for a child or young person at the earliest possible stage.** In the event of a referral to Front Door being necessary, parents/carers will be informed and consent to this will be sought unless there is a valid reason not to do so, eg if to do so would put a child at risk of harm.
- On occasion, staff may pass information about a child to the DSL, but remain anxious about action subsequently taken. Staff should feel able to clarify with the DSL further progress, so that they can reassure themselves the child is safe and their welfare is being considered. If following this process the staff member remains concerned it is the responsibility of that staff member to follow the academy's escalation process.
- If after a referral a child's situation does not appear to be improving then the DSL (or the person that made the referral) will press for reconsideration to ensure that the academy's concerns have been addressed and, most importantly, that the child's situation improves. Professional disagreements (escalation) will be responded to in line with the KSCMP procedures and DSLs may request support via the Education Safeguarding Team.

### 13. Record keeping

- Staff will record any welfare concern that they have about a child on the academy's safeguarding incident/concern form (with a body map where injuries have been observed) and pass them without delay to the DSL. Records will be completed as soon as possible after the incident/event, using the child's words and will be signed and dated.
- All safeguarding concerns, discussions and decisions made and the reasons for those decisions will be recorded in writing. If members of staff are in any doubt about recording requirements staff then they will discuss their concerns with DSL.
- **Incident/concern forms are kept** in each classroom, in the FLO office and in the Main School Office.
- Safeguarding records are kept for individual children and separate from all other records relating to the child in the academy. They are retained centrally and securely by the DSL and are shared with staff on a 'need to know' basis only.
- The Principal will be kept informed of any significant issues by the DSL.
- All safeguarding records will be forwarded in accordance with data protection legislation to a child's subsequent school/setting, under confidential and separate cover to the new DSL or Headteacher and a receipt of delivery will be obtained.
- Detailed guidance on Record Keeping is found in a separate document "Guidelines for Safeguarding Record Keeping in Schools".
- Where reasonably possible the academy will hold more than one emergency contact for each child.

- The Principal will be kept informed of any significant issues by the DSL.

## 14. Multi-agency working

- Langley Park Primary Academy recognises and is committed to its responsibility to work with other professionals and agencies in line with statutory guidance (WTTSC 2018).
- Academies are not the investigating agency when there are child protection concerns and the academy will therefore pass all relevant cases to the statutory agencies. We will however contribute to the investigation and assessment processes as required, and recognise that a crucial part of this may be in supporting the child while these take place.
- Langley Park Primary Academy recognises the importance of multi-agency working and will ensure that staff are enabled to attend relevant safeguarding meetings, including Child Protection Conferences, Core Groups, Strategy Meetings, Child in Need meetings and Early Help Teams around the Child / Family.
- The academy Senior Leadership Team and DSL will work to establish strong and co-operative relationships with relevant professionals in other agencies.

## 15. Confidentiality and information sharing

- Langley Park Primary Academy recognises that all matters relating to child protection are confidential. The Principal or DSL will only disclose information about a student to other members of staff on a need to know basis.
- All members of staff must be aware that whilst they have duties to keep any information about children, families and colleagues which have access to as a result of their role confidential, they also have a professional responsibility to share information with other agencies in order to safeguard children.
- All staff must be aware that they cannot promise a child to keep secrets that might compromise the child's safety or wellbeing. Further advice on responding to disclosures can be found in Appendix 4.

## 16. Complaints

- The academy has a **Complaints Procedure** available to parents, students and members of staff who wish to report concerns. This can be found on the academy website.
- All reported concerns will be taken seriously and considered within the relevant and appropriate process. Anything that constitutes an allegation against a member of staff or volunteer will be dealt with under the specific **Procedures for Managing Allegations Against Staff policy**. This can be found on the academy website.

## 17. Allegations against members of staff and volunteers

- Langley Park Primary Academy recognises that it is possible for staff and volunteers to behave in a way that might cause harm to children and takes seriously any allegation received. Such allegations should be referred immediately to the Principal who will first contact the Local Authority Designated Officer (LADO) to agree further action to be taken in respect of the child and staff member. In the event of allegations of abuse being made against the Principal then staff are advised that allegations should be reported directly to the Trust Chief Executive Officer and/or the Trust Chief Operations Officer, who will then engage with the LADO.
- All staff and volunteers should feel able to raise concerns about poor or unsafe practice and such concerns will always be taken seriously by the senior leadership team.

- All members of staff are made aware of the academy's Whistle-blowing procedure and that it is a disciplinary offence not to report concerns about the conduct of a colleague that could place a child at risk.
- Members of staff can also access the NSPCC whistleblowing helpline if they do not feel able to raise concerns regarding child protection failures internally. Staff can call: 0800 028 0285 (8:00 AM to 8:00 PM Monday to Friday) or email: [help@nspcc.org.uk](mailto:help@nspcc.org.uk)
- For specific guidance on how to respond to allegations against staff, please refer to the **“Procedures for Managing Allegations Against Staff” and Whistle Blowing Policy** which can be found on the academy website.
- Langley Park Primary Academy has a legal duty to refer to the Disclosure and Barring Service (DBS) anyone who has harmed or poses a risk of harm to a child. If these circumstances arise in relation to a member of staff the academy a referral will be made as soon as possible after the resignation or removal of the individual in accordance with advice from the LADO.

## 18. Peer on Peer Abuse

- Langley Park Primary Academy recognises that children are capable of abusing their peers. Peer on peer abuse can take many forms, including (but not limited to) bullying, cyberbullying, hazing (initiation type violence), sexualised bullying and violence and sexting. The academy is mindful that some potential issues may be affected by the gender, age, ability and culture of those involved.
- Langley Park Primary Academy believes that abuse is abuse and it will never be tolerated, dismissed or minimised, and cannot be passed off as “banter”, “just having a laugh” or “part of growing up”. The academy will ensure that appropriate curriculum time is dedicated to enable children to develop an awareness and understanding of abusive behaviour and to ensure that children recognise warning signs and supports of support both within the academy and externally (such as Kent Police, ChildLine etc.). The academy also has staff that are dedicated to support children who have concerns.
- ‘Upskirting’ is a criminal offence and will not be tolerated. It typically involves someone taking a photograph under a person’s clothes without them knowing , with the intention of viewing their genitals or buttocks to obtain sexual gratification or cause the victim humiliation, distress or alarm.
- ‘Sexting’ or Youth Produced Sexual Images will not be tolerated and the academy will respond in line with UK Council for Child Internet Safety (UKCCIS) guidance.
- Further information about the academy’s response to allegations of abuse against students can be located in the academies Behaviour, Anti-Bullying and e-Safety policy.
- Langley Park Primary Academy is aware of and will follow the local Safeguarding Children Multi-agency Partnership procedures for supporting children who are at risk of harm as a result of their own behaviour.

## 19. Safeguarding children with special educational needs and disabilities

- Langley Park Primary Academy acknowledges that children with special educational needs (SEN) and disabilities can face additional safeguarding challenges as they may have an impaired capacity to resist or avoid abuse. They may have speech, language and communication needs which may make it difficult to tell others what is happening
- Langley Park Primary Academy will ensure that children with SEN and disabilities, specifically those with communication difficulties will be supported to ensure that their voice is heard and acted upon.
- The academy recognises that children with SEN or disabilities are more prone to peer on peer abuse and peer group isolation than other children.



- Members of staff are encouraged to be aware that safeguarding concerns such as bullying can disproportionately impact children with SEN and disabilities. All members of staff will be encouraged to appropriately explore possible indicators of abuse such as behaviour/mood change or injuries and not to assume that they are related to the child's disability and be aware that children with SEN and disabilities may not always outwardly display indicators of abuse.

## 20. Curriculum and staying safe

- Academies play an essential role in helping children to understand and identify the parameters of what is appropriate child and adult behaviour; what is 'safe'; to recognise when they and others close to them are not safe; and how to seek advice and support when they are concerned.
- Langley Park Primary Academy will use the curriculum to provide opportunities for increasing self-awareness, self-esteem, social and emotional understanding, assertiveness and decision making so that students have a range of contacts and strategies to ensure their own protection and understand the importance of protecting others, including online.
- Students will be educated at a level appropriate to their age and ability about a range of safeguarding concerns through personal, social, health and economic education (PSHE) and through sex and relationship education (SRE). This will include, but is not limited to the draft RSE policy for an early adopter school which encompasses a range of resources and guidance. Langley Park Primary Academy is an early adopter of the new RSE guidance to be statutory in all schools from September 2020, but will be in use from September 2019 at Langley Park.
- Systems have been established to support the empowerment of children to talk to a range of staff. Children at Langley Park Primary Academy will be listened to and heard and their concerns will be taken seriously and acted upon as appropriate.
- Specific systems outside of expected day-to-day classroom interaction and support would include:
  - Student Council;
  - Peer-mentoring systems;
  - Support from Educational Psychology Service;
  - Dandelion Time
  - Project Sailus

## 21. Online safety

- It is recognised by Langley Park Primary Academy that the use of technology presents particular challenges and risks to children and adults both inside and outside of the academy.
- Langley Park Primary Academy identifies that the issues classified within online safety are considerable, but can be broadly categorised into three areas of risk:
  - **content:** being exposed to illegal, inappropriate or harmful material
  - **contact:** being subjected to harmful online interaction with other users
  - **conduct:** personal online behaviour that increases the likelihood of, or causes, harm
- The DSL and leadership team have read annex C regarding Online Safety within '**Keeping Children Safe in Education**' 2019 (KCSIE).
- Langley Park Primary Academy will ensure that appropriate filtering and monitoring systems are in place when students and staff access academy systems and Internet provision. The academy will be careful to ensure that these systems do not place

unreasonable restrictions on internet access or limit what children can be taught with regards to online teaching and safeguarding

- Langley Park Primary Academy acknowledges that whilst filtering and monitoring is an important part of academy's online safety responsibilities, it is only one part of our role. Children and adults may have access to systems external to the academy control such as mobile phones and other Internet enabled devices and technology. This is covered in more depth within the academy **online safety policy**.
- Langley Park Primary Academy recognises the specific risks that can be posed by mobile phones and cameras and in accordance with KCSIE 2019 has appropriate policies around their use that are shared and understood by all members of the academy community.
- Langley Park Primary Academy will ensure a comprehensive whole academy curriculum response is in place to enable all students to learn about and manage online risks effectively and will support parents and the wider academy community (including all members of staff) to become aware and alert to the need to keep children safe online.
- Detailed information about the academy's response to online safety can be found in the academy **Online Safety policy** and **Acceptable Use policy**.

## **22. Gangs, County Lines, Violent Crime and Exploitation**

- Langley Park Primary Academy recognises the impact of gangs, county lines, violent crime and exploitation can have within a community. It is recognised that the initial response to child victims is important and that staff will take allegations seriously and work in ways that support children and keep them safe.
- All staff have been trained and recognise the need to be vigilant for signs that may include:
  - Unexplained gifts or possessions;
  - Increased absence from school;
  - Change in friendships/relationships with other groups;
  - Significant decline in performance;
  - Signs of self-harm/significant change in wellbeing;
  - Signs of assault/unexplained injuries.

## **23. The use of academy premises by other organisations**

- Where services or activities are provided separately by another body using the academy premises, the Principal and Academy Board, through the Business Manager, will seek written assurance that the organisation concerned has appropriate policies and procedures in place with regard to safeguarding children and child protection and that relevant safeguarding checks have been made in respect of staff and volunteers.
- If this assurance is not achieved, then an application to use premises will be refused.

## **24. Security**

- All members of staff have a responsibility for maintaining awareness of buildings and grounds security and for reporting concerns that may come to light.
- Appropriate checks will be undertaken in respect of visitors and volunteers coming into academy as outlined within guidance. Visitors will be expected to sign in and out via the visitor's log and to display a visitor's badge whilst on academy site. Any individual who is not known or identifiable should be challenged for clarification and reassurance.
- The academy will not accept the behaviour of any individual (parent or other) that threatens academy security or leads others (child or adult) to feel unsafe. Such behaviour

will be treated as a serious concern and may result in a decision to refuse access for that individual to the academy site.

# **Appendix 1: Responsibilities of the Academy Board and the Principal**

## **The Academy Board has the responsibility to ensure:**

- There is a named Designated Safeguarding Lead (DSL), who is a member of the senior leadership team and who has undertaken approved training in inter-agency working, in addition to basic child protection training
- The academy has an up-to-date child protection policy which is consistent with KSCMP requirements, reviewed annually and made available to parents on request
- Procedures are in place for dealing with allegations of abuse made against members of staff including allegations made against the head teacher
- Safer recruitment procedures, which include the requirement for appropriate checks in line with national guidance are in place
- There is an up-to-date and appropriate training strategy which ensures all members of staff, including the managers, teaching and non-teaching staff, receive safeguarding training
- That all temporary staff and volunteers are made aware of the academy's arrangements for safeguarding.
- That appropriate filters and appropriate monitoring systems and Internet enabled devices are in place whilst being mindful to ensure that "over blocking" does not lead to unreasonable restrictions as to what children can be taught with regards to online teaching and safeguarding
- That the Academy Board nominates the Chair to be responsible for liaising with Chief Executive (and as necessary relevant external agencies) in the event of an allegation being made against the Principal.
- That children are taught about safeguarding, including online, through teaching and learning opportunities, as part of providing a broad and balanced curriculum.

## **The Principal has the responsibility to ensure:**

- That the Safeguarding and Child Protection Policy and procedures are implemented and followed by all staff
- That sufficient time and resources are allocated to enable the DSL (and any appropriately trained deputies) to carry out their roles effectively, including the assessment of students and the attendance at strategy discussions and other necessary meetings
- That all members of staff feel able to raise concerns about poor or unsafe practice and that such concerns are handled sensitively and in accordance with the academy's whistle blowing procedures
- That child's safety and welfare is addressed through the curriculum.

## Appendix 2: Categories of Abuse

**Abuse:** a form of maltreatment of a child. Somebody may abuse or neglect a child by inflicting harm, or by failing to act to prevent harm. They may be abused by an adult or adults or another child or children. It should be noted that abuse can be carried out both on and offline and be perpetrated by men, women and children. All members of staff should read and understand Part 1 of 'Keeping Children Safe in Education' 2019 and staff who have direct contact with students should also read annex A.

**Sexual abuse:** involves forcing or enticing a child or young person to take part in sexual activities, not necessarily involving a high level of violence, whether or not the child is aware of what is happening. The activities may involve physical contact, including assault by penetration (for example rape or oral sex) or non-penetrative acts such as masturbation, kissing, rubbing and touching outside of clothing. They may also include non-contact activities, such as involving children in looking at, or in the production of, sexual images, watching sexual activities, encouraging children to behave in sexually inappropriate ways, or grooming a child in preparation for abuse (including via the internet). Adult males do not solely perpetrate sexual abuse. Women can also commit acts of sexual abuse, as can other children.

### Signs that MAY INDICATE Sexual Abuse

- Sudden changes in behaviour and academic performance
- Displays of affection which are sexual and age inappropriate
- Self-harm, self-mutilation or attempts at suicide
- Alluding to secrets which they cannot reveal
- Tendency to cling or need constant reassurance
- Regression to younger behaviour for example thumb sucking, playing with discarded toys, acting like a baby
- Distrust of familiar adults e.g. anxiety of being left with relatives, a child minder or lodger
- Unexplained gifts or money
- Depression and withdrawal
- Fear of undressing for PE
- Sexually transmitted disease
- Fire setting

**Physical abuse:** a form of abuse which may involve hitting, shaking, throwing, poisoning, burning or scalding, drowning, suffocating or otherwise causing physical harm to a child. Physical harm may also be caused when a parent or carer fabricates the symptoms of, or deliberately induces, illness in a child.

### Signs that MAY INDICATE physical abuse

- Bruises and abrasions around the face
- Damage or injury around the mouth
- Bi-lateral injuries such as two bruised eyes
- Bruising to soft area of the face such as the cheeks
- Fingertip bruising to the front or back of torso
- Bite marks
- Burns or scalds (unusual patterns and spread of injuries)
- Deep contact burns such as cigarette burns
- Injuries suggesting beatings (strap marks, welts)
- Covering arms and legs even when hot
- Aggressive behaviour or severe temper outbursts.

- Injuries need to be accounted for. Inadequate, inconsistent or excessively plausible explanations or a delay in seeking treatment should signal concern.

**Emotional abuse:** the persistent emotional maltreatment of a child such as to cause severe and adverse effects on the child's emotional development. It may involve conveying to a child that they are worthless or unloved, inadequate, or valued only insofar as they meet the needs of another person. It may include not giving the child opportunities to express their views, deliberately silencing them or 'making fun' of what they say or how they communicate. It may feature age or developmentally inappropriate expectations being imposed on children. These may include interactions that are beyond a child's developmental capability as well as overprotection and limitation of exploration and learning, or preventing the child participating in normal social interaction. It may involve seeing or hearing the ill treatment of another. It may involve serious bullying (including cyberbullying), causing children frequently to feel frightened or in danger, or the exploitation or corruption of children. Some level of emotional abuse is involved in all types of maltreatment of a child, although it may occur alone.

### **Signs that MAY INDICATE emotional abuse**

- Over reaction to mistakes
- Lack of self-confidence/esteem
- Sudden speech disorders
- Self-harming
- Eating Disorders
- Extremes of passivity and/or aggression
- Compulsive stealing
- Drug, alcohol, solvent abuse
- Fear of parents being contacted
- Unwillingness or inability to play
- Excessive need for approval, attention and affection

**Neglect:** the persistent failure to meet a child's basic physical and/or psychological needs, likely to result in the serious impairment of the child's health or development. Neglect may occur during pregnancy as a result of maternal substance abuse. Once a child is born, neglect may involve a parent or carer failing to: provide adequate food, clothing and shelter (including exclusion from home or abandonment); protect a child from physical and emotional harm or danger; ensure adequate supervision (including the use of inadequate care-givers); or ensure access to appropriate medical care or treatment. It may also include neglect of, or unresponsiveness to, a child's basic emotional needs.

### **Signs that MAY INDICATE neglect.**

- Constant hunger
- Poor personal hygiene
- Constant tiredness
- Inadequate clothing
- Frequent lateness or non-attendance at the academy
- Untreated medical problems
- Poor relationship with peers
- Compulsive stealing and scavenging
- Rocking, hair twisting and thumb sucking
- Running away
- Loss of weight or being constantly underweight
- Low self esteem

## **Appendix 3: Specific Safeguarding Issues**

### **[See Annex A of Keeping Children Safe in Education 2019 (KCSIE)]**

#### **Children Missing Education**

Langley Park Primary Academy recognises that all children, regardless of their circumstances, are entitled to a full time education that is suitable to their age, ability, aptitude and any special educational needs they may have. Langley Park Primary Academy is aware that a child going missing from education is a potential indicator of abuse or neglect.

Langley Park Primary Academy has procedures in place for responding to unauthorised absence and for dealing with children that go missing from education, particularly on repeat occasions, to help identify the risk of abuse and neglect, including sexual exploitation, and to help prevent the risks of their going missing in future. For further information, please refer to the academy policy and procedures regarding **attendance** and **inclusion**.

#### **Child Sexual Exploitation (CSE)**

Langley Park Primary Academy identifies that CSE involves exploitative situations, contexts and relationships where young people receive something (for example food, accommodation, drugs, alcohol, gifts, money or in some cases simply affection) as a result of engaging in sexual activities.

Langley Park Primary Academy is aware that sexual exploitation can take many forms ranging from the seemingly 'consensual' relationship where sex is exchanged for affection or gifts, to serious organised crime by gangs and groups. Like all forms of child sex abuse, child exploitation:

- can affect any child or young person (male or female) under the age of 18 years, including 16 and 17 year olds who can legally consent to have sex;
- can still be abuse even if the sexual activity appears consensual;
- can include both contact (penetrative and non-penetrative acts) and non-contact sexual activity;
- can take place in person or via technology, or a combination of both;
- can involve force and/or enticement-based methods of compliance and may, or may not, be accompanied by violence or threats of violence;
- may occur without the child or young person's immediate knowledge (e.g. through others copying videos or images they have created and posted on social media);
- can be perpetrated by individuals or groups, males or females, and children or adults. The abuse can be a one-off occurrence or a series of incidents over time, and range from opportunistic to complex organised abuse; and
- is typified by some form of power imbalance in favour of those perpetrating the abuse. Whilst age may be the most obvious, this power imbalance can also be due to a range of other factors including gender, sexual identity, cognitive ability, physical strength, status, and access to economic or other resources".

Every member of staff at Langley Park Primary Academy recognises that children at risk of CSE need to be identified and issues relating to CSE should be approached in the same way as protecting children from other risks.

#### **'Honour based' violence**

Members of staff at Langley Park Primary Academy are aware that 'Honour-based' violence (HBV) encompasses a range of crimes which have been committed to protect or defend the honour of the family and/or the community, including Female Genital Mutilation (FGM), forced marriage, and practices such as breast ironing. It can involve multiple perpetrators.

The indicators of HBV and associated factors will be covered with staff within the academy safeguarding training. All members of staff are alert to the possibility of a child being at risk of HBV, or already having suffered HBV. All members of staff are aware that all forms of HBV are abuse (regardless of the motivation) and will be handled and escalated as such. Staff will speak with DSL if they are concerned about HBV.

All members of staff will follow the academy procedures, using existing national and local protocols for multi-agency liaison with police and children's social care.

## **Forced Marriage**

The government Forced Marriage Unit has published 'Multi-agency practice guidelines: Handling cases of Forced Marriage', with pages 32-36 focusing on the role of schools and colleges. Staff should report any concerns regarding forced marriage to the DSL or can contact the Forced Marriage Unit if they need advice or information. Contact: 020 7008 0151.

## **Female Genital Mutilation (FGM) mandatory reporting duty**

Teachers must personally report to the police cases where they discover that an act of FGM appears to have been carried out. Unless the teacher has a good reason not to, they should also still consider and discuss any such case with the DSL and involve children's social care as appropriate. The duty does not apply in relation to at risk or suspected cases (i.e. where the teacher does not discover that an act of FGM appears to have been carried out, either through disclosure by the victim or visual evidence) or in cases where the woman is 18 or over. In these cases, teachers should follow local safeguarding procedures.

## **Radicalisation**

Extremism is defined as vocal or active opposition to fundamental values, including the rule of law, individual liberty and mutual respect and tolerance of different faiths and beliefs. Extremists often target vulnerable members of society to sow divisions between communities on the basis of race, faith or denomination.

Langley Park Primary Academy recognises that exposure of children (and adults) to extremist ideology can hinder their social development and educational attainment alongside posing a very real risk that they could support or partake in an act of violence. Radicalisation of young people can be compared to grooming for sexual exploitation.

Langley Park Primary Academy will ensure all staff complete an e-learning training package developed by The National Counter Terrorism Policing Headquarters (NCTPHQ), in conjunction with the College of Policing that includes guidance on how to identify people who may be vulnerable to being drawn into terrorism, and how to refer them into the Channel process. The DSL will attend additional training that includes further information on the Prevent Duty.

Every member of staff at Langley Park Primary Academy recognises that children exposed to radicalisation and extremism is no different to safeguarding against any other vulnerability and



should be approached in the same way as protecting children from other risks. All members of the community at Langley Park Primary Academy will report concerns regarding radicalisation and extremism to the DSL who will follow local and national guidance.

Additional information about responding to online radicalisation and extremism can be found in the academy's online safety policy.

## **Criminal Exploitation**

Criminal exploitation of children is a geographically widespread form of harm that is a typical feature of county lines criminal activity: drug networks or gangs groom and exploit children and young people to carry drugs and money from urban areas to suburban and rural areas, market and seaside towns. Key to identifying potential involvement in county lines are missing episodes, when the victim may have been trafficked for the purpose of transporting drugs and a referral to the National Referral Mechanism should be considered. Like other forms of abuse and exploitation, county lines exploitation:

- can affect any child or young person (male or female) under the age of 18 years;
- can affect any vulnerable adult over the age of 18 years;
- can involve force and/or enticement-based methods of compliance and is often accompanied by violence or threats of violence;
- can be perpetrated by individuals or groups, males or females, and young people or adults; and
- is typified by some form of power imbalance in favour of those perpetrating the exploitation. Whilst age may be the most obvious, this power imbalance can also be due to a range of other factors including gender, cognitive ability, physical strength, status, and access to economic or other resources.

Every member of staff at Langley Park Primary Academy recognises that children exposed to criminal activity is no different to safeguarding against any other vulnerability and should be approached in the same way as protecting children from other risks. All members of the community at Langley Park Primary Academy will report concerns to the DSL and appropriate members of the senior leadership team.

## Appendix 4: Keeping yourself safe when responding to disclosures (the 6 R's – what to do if...)

### 1. Receive

- Keep calm
- Listen to what is being said without displaying shock or disbelief
- Take what is being said to you seriously
- Note down what has been said

### 2. Respond

- Reassure the student that they have done the right thing in talking to you
- Be honest and do not make promises you cannot keep e.g. "It will be alright now"
- **Do not promise confidentiality**; you have a duty to refer
- Reassure and alleviate guilt, if the student refers to it e.g. "you're not to blame"
- Reassure the child that information will only be shared with those who need to know

### 3. React

- React to the student only as far as is necessary for you to establish whether or not you need to refer the matter, but do not interrogate for full details
- **Do not** ask leading questions; "Did he/she...?" Such questions can invalidate evidence.
- **Do** ask open "TED" questions; Tell, explain, describe
- Do not criticise the perpetrator; the student may have affection for him/her
- Do not ask the student to repeat it all for another member of staff
- Explain what you have to do next and who you have to talk to

### 4. Record

- Make some brief notes at the time on any paper which comes to hand and write them up as soon as possible
- Do not destroy your original notes
- Record the date, time, place, any non-verbal behaviour and the words used by the child. Always ensure that as far as possible you have recorded the actual words used by the child.
- Record statements and observable things rather than your interpretations or assumptions

### 5. Remember

- Contact the designated safeguarding lead (DSL)
- The DSL may be required to make appropriate records available to other agencies

### 6. Relax

- Get some support for yourself, dealing with disclosures can be traumatic for professionals

# Appendix 5: National Support Organisations

## Support for staff

- Education Support Partnership: [www.educationsupportpartnership.org.uk](http://www.educationsupportpartnership.org.uk)
- Professional Online Safety Helpline: [www.saferinternet.org.uk/helpline](http://www.saferinternet.org.uk/helpline)

## Support for Students

- NSPCC: [www.nspcc.org.uk](http://www.nspcc.org.uk)
- ChildLine: [www.childline.org.uk](http://www.childline.org.uk)
- Papyrus: [www.papyrus-uk.org](http://www.papyrus-uk.org)
- Young Minds: [www.youngminds.org.uk](http://www.youngminds.org.uk)
- The Mix: [www.themix.org.uk](http://www.themix.org.uk)

## Support for adults

- Family Lives: [www.familylives.org.uk](http://www.familylives.org.uk)
- Crime Stoppers: [www.crimestoppers-uk.org](http://www.crimestoppers-uk.org)
- Victim Support: [www.victimsupport.org.uk](http://www.victimsupport.org.uk)
- Kidscape: [www.kidscape.org.uk](http://www.kidscape.org.uk)
- The Samaritans: [www.samaritans.org](http://www.samaritans.org)
- Mind: [www.mind.org.uk](http://www.mind.org.uk)
- NAPAC (National Association for People Abused in Childhood): [www.napac.org.uk](http://www.napac.org.uk)
- MOSAC: [www.mosac.org.uk](http://www.mosac.org.uk)
- Action Fraud: [www.actionfraud.police.uk](http://www.actionfraud.police.uk)

## Support for Learning Disabilities

- Respond: [www.respond.org.uk](http://www.respond.org.uk)
- Mencap: [www.mencap.org.uk](http://www.mencap.org.uk)

## Domestic Abuse

- Refuge: [www.refuge.org.uk](http://www.refuge.org.uk)
- Women's Aid: [www.womensaid.org.uk](http://www.womensaid.org.uk)
- Men's Advice Line: [www.mensadvice.org.uk](http://www.mensadvice.org.uk)
- Mankind: [www.mankindcounselling.org.uk](http://www.mankindcounselling.org.uk)

## Honour based Violence

- Forced Marriage Unit: <https://www.gov.uk/guidance/forced-marriage>

## Sexual Abuse and CSE

- Lucy Faithfull Foundation: [www.lucyfaithfull.org.uk](http://www.lucyfaithfull.org.uk)
- Stop it Now!: [www.stopitnow.org.uk](http://www.stopitnow.org.uk)
- Parents Protect: [www.parentsprotect.co.uk](http://www.parentsprotect.co.uk)
- CEOP: [www.ceop.police.uk](http://www.ceop.police.uk)
- Marie Collins Foundation: [www.mariecollinsfoundation.org.uk](http://www.mariecollinsfoundation.org.uk)
- Internet Watch Foundation (IWF): [www.iwf.org.uk](http://www.iwf.org.uk)

## Online Safety

- Childnet International: [www.childnet.com](http://www.childnet.com)
- UK Safer Internet Centre: [www.saferinternet.org.uk](http://www.saferinternet.org.uk)
- Parents Info: [www.parentsinfo.org](http://www.parentsinfo.org)
- Internet Matters: [www.internetmatters.org](http://www.internetmatters.org)
- Net Aware: [www.net-aware.org.uk](http://www.net-aware.org.uk)

- ParentPort: [www.parentport.org.uk](http://www.parentport.org.uk)
- Get safe Online: [www.getsafeonline.org](http://www.getsafeonline.org)

**Radicalisation and hate**

- Educate against Hate: [www.educateagainsthate.com](http://www.educateagainsthate.com)
- Counter Terrorism Internet Referral Unit: [www.gov.uk/report-terrorism](http://www.gov.uk/report-terrorism)
- True Vision: [www.report-it.org.uk](http://www.report-it.org.uk)