



**Langley Park**  
Primary Academy



**Prospectus**

# Langley Park Primary Academy is part of Leigh Academies Trust



Leigh Academies Trust is one of the country's largest and most-established multi-academy trusts operating across Kent, Medway and South East London. It contains primary, secondary and special academies and is highly inclusive and successful. Our mission is to deliver "education for a better world" by ensuring that young people in our academies have an excellent start in life regardless of their background or ability.

## Our Values

### **We care -**

about our pupils through our human scale approach to education, our staff and their well-being and the communities that we serve, driven by our high ideals and strong moral values.

### **We have boundless ambition -**

to achieve excellence for all and create confident young adults with high levels of resilience and integrity.

### **We work together -**

as one team in the belief that we are greater than the sum of our parts. We foster an enterprising culture through collaboration and in close partnership with industry and other educators.

### **We keep getting better -**

using our 'can-do' attitude towards continuous improvement and innovation.

For admission enquiries telephone:  
01622 250880 or email: [contactus@langleyparkprimaryacademy.org.uk](mailto:contactus@langleyparkprimaryacademy.org.uk)



# Contents

Use our contents page to navigate your way through our prospectus

## Principal's welcome

A message from our Principal

## Vision and values

Learning today for life tomorrow

## Our curriculum

What we offer

## Seedlings Nursery

Our dedicated nursery provision

## The International Baccalaureate Primary Years Programme

We follow the IB PYP specifically designed for pupils aged 3-12

## Our enriching curriculum

School trips and after school clubs

## Our pupils as leaders

The opportunities pupils will receive to exercise their leadership skills

## Applying for a place

How to apply for a place at Langley Park Primary Academy

## Further information

Find our Open Events and more



# Welcome

## Learning today for life tomorrow

### Welcome to Langley Park Primary Academy

It gives me immense pleasure to welcome you to Langley Park Primary Academy. Opened in September 2016, Langley Park has grown in so many ways and is the hub of this new community. We believe in, and celebrate, achievement and success in all areas of the curriculum. We want our children to learn within a culture of curiosity, enjoyment and positive approaches to new experiences and skills to enable them to become successful learners. Through enrichment opportunities we aim to explore the creative arts and PE as often as possible in the academy day; building on existing strengths as well as helping children develop new skills.

Given that the building is purpose built, we have excellent facilities that afford us the opportunity to offer an enhanced curriculum. We have a sensory room, DT room (including a kitchen), a multi use games area and forest school that are all available to be used as part of our pupils' timetables.

In June 2019 Langley Park Primary Academy was recognised by Ofsted as a school with Outstanding Leadership & Management, Early Years and Personal Development, Welfare & Behaviour, with a 'Good' judgement overall.

This prospectus will give you an insight into life at Langley Park Primary Academy. Thank you for taking the time to read it.

Miss S Brading  
Principal




# Our Vision and Values

We believe that children and adults flourish when they learn and work as members of a supportive, cohesive community built on high expectations, rigour, mutual respect and pride in their own and each other's achievements.

With our strapline in mind; "learning today for life tomorrow", we ensure that the children are at the very heart of all that we do and we will not settle for anything short of excellence. We believe that our children are entitled to a world class education. We are a disciplined academy, where pupils thrive in a culture defined by mutual respect and impeccable behaviour. Regardless of a child's need, context or beginnings, we are absolutely committed for each child to be the best version of themselves and this is done through establishing supportive partnerships with all stakeholders; staff, parents and governors where we are all on the same team; the child's team. Every pupil matters, every pupil can achieve, every lesson counts.

We focus not only on the academic development of our children but also their personal development as well. Providing a nurturing environment, within which children feel safe and happy, is essential in supporting them to achieve their potential. We promote kindness, understanding and tolerance with the children through actions and words so that they can successfully navigate through their school life forging positive and healthy relationships. This, ultimately, will establish firm foundations on which they can build character and attributes to be successful in all of their future endeavours.

Throughout our methodologies we commit to ensuring every child is consistently provided with the opportunities to equip themselves with the values and attributes that will support them when faced with future challenges and experiences so we truly make the most of the children's learning today to put them in the best possible position for life tomorrow.



Learning today  
for life tomorrow

# Our Curriculum

The core purpose and intent of the curriculum within Langley Park Primary Academy is to equip pupils with the necessary skills, knowledge and attributes to be lifelong learners and conscientious global citizens that contribute positively to modern day society. This will allow our children opportunities to develop as inquirers, thinkers, communicators, risk-takers, and to be knowledgeable, principled, caring, open-minded, balanced and reflective. Leaders at all levels are ambitious in the pursuit of an educational diet that is second to none that leaves no learner behind and all pupils, including disadvantaged and pupils with SEN, are able to be the best version of themselves.

Organised within the framework of the International Baccalaureate Primary Years Programme, relevant, current and challenging contexts are used for learning to be logically planned and sequenced. Extensive work has taken place to ensure that the learning content is more ambitious than the National Curriculum alone through a marriage of the IB PYP Scope and Sequence documentation and the National Curriculum programmes of studies. The enhancement comes in the form of clearly defined key concepts and related concepts that enable pupils to make authentic and solid connections between previous, current and future learning through transdisciplinary learning. As a result of this, learning “sticks” and therefore over time equips pupils with the culture capital they need to succeed in life in the long term as opposed to just the next stage in their educational journey.





# Seedlings Nursery

Our warm welcoming nursery offers an outstanding start to your child's early education.

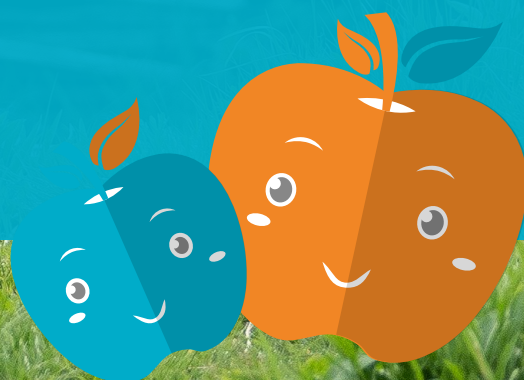
We are open Monday to Friday between 8.40am and 3.10pm.

We also have breakfast club provision within our main school which is available from 7.30am until 8.40am, which incurs an additional cost of £3.00 per session.

We offer our children either 15 hours or 30 hour funded sessions, depending upon eligibility.

Our nursery sessions are delivered by our highly skilled practitioners who scaffold children's play through high quality interactions and learning opportunities.

We cover all areas of the Early Years Curriculum, which are carefully crafted to be entwined with our Primary Years Programme (PYP). Through doing so we help to nurture our children and encourage them to develop the following key attributes which we feel are fundamental to creating lifelong learners.





# The International Baccalaureate Primary Years Programme

Langley Park Primary Academy proudly became an IB World School in 2021.

The International Baccalaureate (IB) Primary Years Programme (PYP) is designed for students aged 3 to 12. It focuses on the development of the whole child as an inquirer, both in the classroom and in the world outside. It is a framework guided by six transdisciplinary themes of global significance, explored using knowledge and skills with a powerful emphasis on inquiry. The PYP is flexible enough to accommodate the demands of most national or local curriculum and provides a superior foundation for students as they move through their education at Langley Park Primary Academy. Below is a visual aid depicting the PYP.



© International Baccalaureate Organisation 2018

When a class is embarking on a new idea they always begin with a carefully planned provocation that encourages the children to discover and investigate whilst simultaneously making links with previous learning. Through selecting and investigating Key Concepts, the children start to plan questions they would like to learn more about. From here, the children create their central

idea from what they know already. Through careful reflections, the children adapt and change these central ideas and then create new questions to investigate. This ensures that children have their own voice, choice and ownership and in order to create key big ideas about what they know. They are the drivers of their own learning in the classroom and beyond.

*Continued on next page...*





The ethos behind the framework is to inform learners of global issues and to promote the confidence of taking action and making a difference and with the children leading this, it becomes even more powerful. The children get an opportunity to learn about key aspects of life from climate change to poverty, and from gender equality to economic growth. They learn about these in relevant and meaningful ways through a curriculum that ensures that every child achieves their full potential.

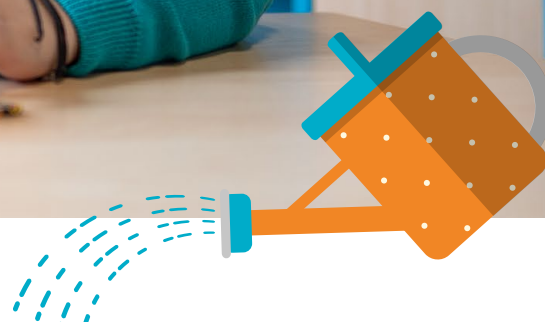
Langley Park Primary Academy is an authorised IB World School.\*

*\*Only schools authorized by the IB Organization can offer any of its four academic programmes: the Primary Years Programme (PYP), the Middle Years Programme (MYP), the Diploma Programme, or the Career-related Programme (CP). Candidate status gives no guarantee that authorization will be granted. For further information about the IB and its programmes, visit [www.ibo.org/inquirers](http://www.ibo.org/inquirers)*

© International Baccalaureate Organisation 2018







# Our enriching curriculum

## Academy experiences and trips

At Langley Park Primary Academy, we believe that our pupils benefit significantly from visiting places of interest and we know these experiences will broaden pupils' horizons and deepen their learning. We will run regular trips to universities, museums, galleries, theatres and sports venues. You will always be informed if your child has been invited to take part in a trip or visit.

We will ask parents for a contribution towards the cost of Academy trips where necessary. We do not want cost to be a reason for pupils to miss out, so if parents are unable to make a contribution they should discuss this with the Academy.

## Careers education

At Langley Park Primary Academy we are committed to developing each learner's interests and wider life long goals too. As part of the IB Programme enabling our pupils to think about the wider world is at the heart of everything we do. The staff are always encouraging children to think about, in a broader sense, the skills they are developing in order to be successful adults in the near future.

As the children's learning journey through LPPA grows so does the understanding that having a career they are passionate about does too. We also offer members of the local community to share their career experiences with our learners and this runs from Nursery through to Year 6.



## Extra-curricular clubs

At Langley Park Primary Academy, we are always looking at new and interesting ways to extend and enrich the learning. Across the school year, staff provide a range of clubs which focus on developing skills, furthering knowledge and having fun.

Each term, children are allowed to sign up for at least one club. Clubs run from 3.45pm until 4.30pm and may require a cost depending on the content. There is an expectation that children will remain in the same club for the term. This will enable them to fully participate in the activities and gain from the experience.

## Pupils as leaders

We like to provide our pupils with as many opportunities to develop their leadership characteristics. These opportunities include;

- School Council
- Diversity Ambassadors
- Classroom Monitors
- Play Leaders
- House Captains



## Houses

Pupils of Langley Park Primary Academy are organised into four houses, outlined above, upon their first day in attendance at the academy.

Using a house system within the school provides opportunities for pupil leadership, inter-house competition in many different areas and a sense of belonging to a community within the academy.



# Applying for a place at Langley Park Primary Academy

Your first point of contact with Langley Park Primary Academy is usually at the School Office, which is open between 8.30am – 4.15pm daily and you can contact us on 01622 250880 or via email at [contactus@langleyparkprimaryacademy.org.uk](mailto:contactus@langleyparkprimaryacademy.org.uk).

## In-year casual admission

If you wish your child to start at Langley Park as a result of moving into the area and/or transferring from another school, please place your child on the list for future entrants by completing an In-Year Admission Form (found on the KCC website). Details of how to apply are available from our office staff.

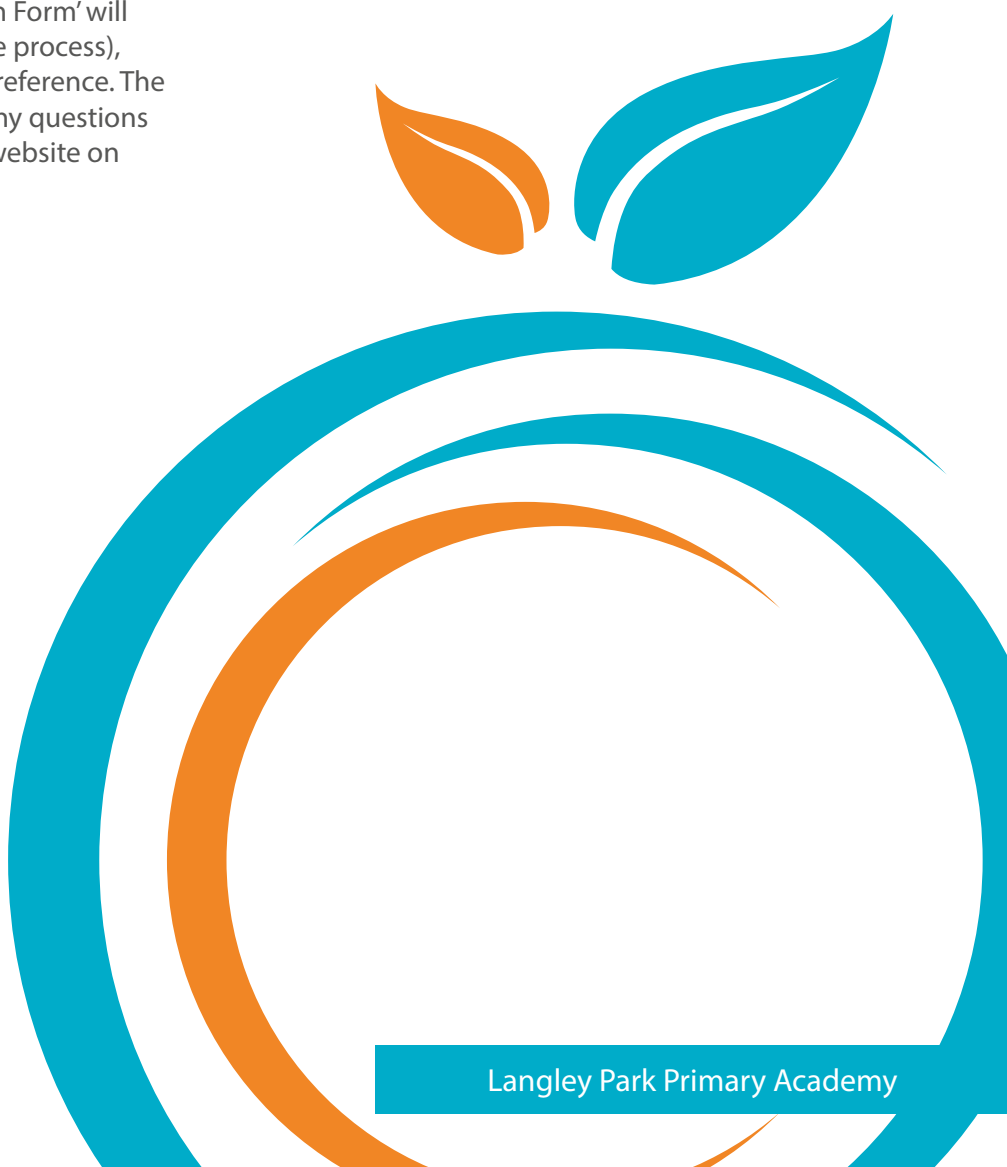
## For new Reception children

A KCC 'Reception Common Application Form' will need to be completed (this is an online process), expressing Langley Park as your first preference. The office staff will be pleased to answer any questions you may have. Kent County Council's website on School Admission can be found [here](#).

Before making an application for an in-year admission you may wish to take a preliminary look at the academy; you and your children are very welcome to visit us. You can have a look around the academy and we can answer any questions you may have. Please contact us to make an appointment. We have specific dates and times for Open Days each year for our new reception intake – we publish dates online in September/October time for the following year's intake into Reception.

Pupils are admitted to school in accordance with the Langley Park Primary Academy Admissions Policy.

All forms should be completed and returned to the school by the deadline indicated on the form.





**Langley Park**  
Primary Academy

# Further INFORMATION

Please visit our academy website

[Langley Park Primary Academy](#)

## Our Academy Day

Find out how a day is structured at Langley Park Primary Academy

[Visit our website](#)

## Academy Uniform

Please visit us to see more information

[Visit our website](#)

## Our Curriculum

Please visit us to see more information

[Visit our website](#)





**Langley Park**  
Primary Academy

Langley Park Primary Academy  
Edmett Way  
Maidstone, Kent  
ME17 3FX

01622 250880  
[contactus@langleyparkprimaryacademy.org.uk](mailto:contactus@langleyparkprimaryacademy.org.uk)  
[langleyparkprimaryacademy.org.uk](http://langleyparkprimaryacademy.org.uk)

Learning today for life tomorrow



**LEIGH**  
Academies Trust

Education for a better world

Chief Executive: Simon Beamish BA (Hons) MSc PGCE NPQH NLE FCCT

Carnation Road, Strood, Rochester, Kent ME2 2SX  
01634 412200 | fax: 01634 412201  
[info@latrust.org.uk](mailto:info@latrust.org.uk) | [leighacademiestrust.org.uk](http://leighacademiestrust.org.uk)

Leigh Academies Trust is a registered company (company no 2336587) and an exempt charity.